

After your PET/CT



When your procedure is finished, you should feel no side effects from the radioactive glucose tracer. You can resume your normal activities and diet, but you should drink plenty of fluids for a few hours after the exam. Drinking fluids will help you flush the tracer out of your system.

Here is what happens next:

- Our PET/CT technologist prepares your images for the radiologist to evaluate.
- The radiologist interprets your results and writes a report.
- The report is sent to your doctor. Your doctor will talk with you about the results and next steps.

Five locations to serve you!

East Bank

4241 Veterans Blvd., Suite 100 Metairie, LA 70006

West Bank

925 Avenue C, Marrero, LA 70072

Northshore – East

1310 Gause Blvd, Slidell, LA 70458

Northshore – West

71154 Highway 21, Covington, LA 70433

1200 Pinnacle Pkwy, Suite 5, Covington, LA 70433

Appointments: (P) 504-883-5999 or 985-641-2390

Call 504-459-3220 for pricing on any of our examinations or insurance benefits verification.

For driving directions to any DIS facility, visit:
www.disnola.com/locations



What you should know



PET/CT

Positron Emission Tomography

Computed Tomography



Metairie | Marrero

Covington | Slidell

Preparing for your PET/CT



Your comfort during the procedure is one of our highest priorities. We can achieve it through your help with the following:

- Please arrive on time for the exam. Please remember to bring your insurance card, your referral form, a current list of medications, previous x-rays and any CT and MRI films/CDs.
- Please wear comfortable clothing and leave all valuable items at home. Avoid underwire bras, girdles, metal snaps and pins.
- Please do not eat four hours prior to your procedure, but do drink plenty of water.
- Please do not exercise or engage in strenuous activity the day before and the day of your exam.
- If you are diabetic, you will be given instructions by your doctor regarding your medications for the day of your PET/CT scan.
- Please notify us if you are taking any medications for seizures. All other medications should be taken as prescribed.
- If you are pregnant, think you may be pregnant or are nursing, please consult your physician before scheduling your PET/CT appointment.
- If you must reschedule or cancel your appointment, we require at least 24 hours' notice.
- If you are uncomfortable at any time during your procedure, please notify your technologist right away.

Positron Emission Tomography (PET) produces images of how the body functions and measures metabolic activity. Computed Tomography (CT) provides cross-sectional images of the body. PET/CT combines these two noninvasive procedures into one comprehensive exam.

What are the benefits to having a PET/CT study?

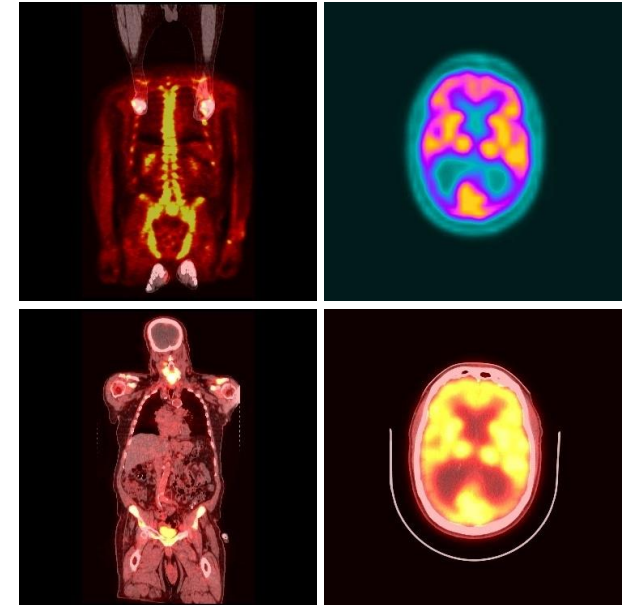
For our patients, this advanced technique reduces scan time and increase accuracy and comfort, while providing physicians with exceptional views of the whole body and its functions.

- PET/CT has proven particularly valuable in diagnostic applications for cancers that are not easily reached for biopsy, such as lung cancer.
- PET/CT provides accurate disease staging and localization for biopsy, surgery or treatment planning.
- PET/CT detects residual or recurrent disease and is an excellent diagnostic procedure to differentiate tumor recurrences from radiation necrosis or post-surgical changes. Such an approach allows for the development of a more rational treatment plan for the patient.
- PET/CT can help guide further therapy by either confirming response or signaling the need for a change in therapy.

The benefits of PET/CT in the entire spectrum of cancer care have come into focus in recent years as the technology has become a standard practice.

During your PET/CT

Prior to your exam, a small amount of radioactive glucose “tracer” will be given to you through injection. You will be asked to rest for 45 minutes while the tracer travels through your body and settles in the organs that need to be examined.



During the exam, you will lie on the scanner table. The table will move in small increments during the scan, allowing images to be taken of multiple areas of the body. As the tracer emits them, then converts them into pictures using our advanced computer technology.

You can expect the scanning procedure to take less than an hour. Your PET/CT technologist will be present in a nearby room through the entire process and will remain in constant communication with you. It is important to pay close attention to their instructions.

While we realize that the scan time can seem long, it is important to remain as still as possible. It is also key to try not making any unnecessary movement during the procedure.